

How to measure

Because choosing your size can be quite difficult, we suggest comparing garment measurements. Measure an existing garment that fits you well and compare your findings to our garment measurements size chart below.

- Lay garment wrinkle free on a flat surface.
- Because fabric is fluid (and sometimes stretches), it can be tricky to get an exact measurement, so plan on about a 2 cm variance.
- Best results come from comparing garments with a similar fit (regular/loose/slim).
- Measure twice! If you don't get the same measurement both times, try again
- We suggest choosing a larger size if your measurements come between two sizes. Optional alterations may be necessary depending on the garment type, style and fit.
- Because we measure the garment flat, you're actually measuring a half a measurement (for the waist/bust/hip).

If you are still unsure about your size, feel free to contact our customer support at info@persu.nl

*All garment measurements are indicative, and no rights can be derived from them. And may be subject to change.

Jackets and Blazers:

Measuring your Jacket is mostly the same for both men and women.

However, for men we carry normal and long sizes.

Jackets are worn over different combinations of clothing (i.e. shirts and sweaters)

It is important to keep this in mind, and that your chosen size does not come in too tight.

1. Center back length:

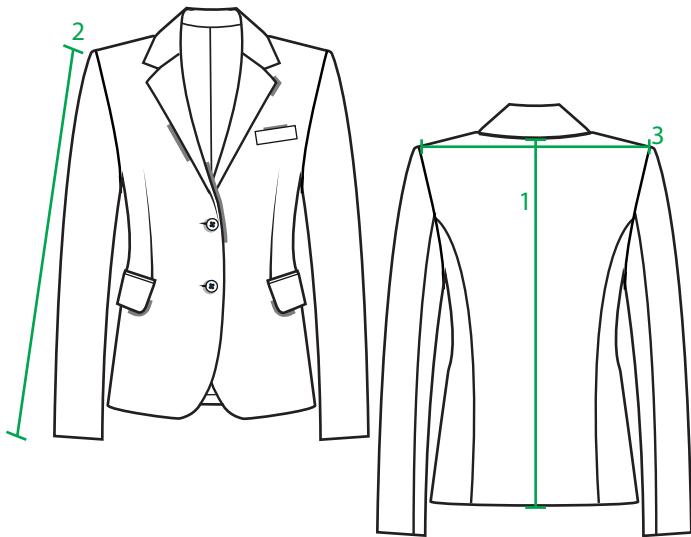
Measure the length of the jacket from where seam meets the collar to the bottom of the jacket.

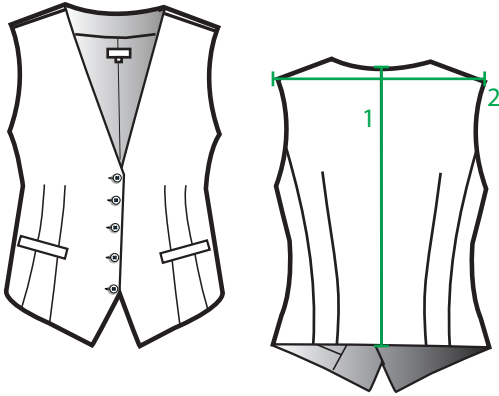
2. Sleeve length:

The sleeve length is measured from the shoulder seam, down the top edge of the sleeve to the end of the cuff.

3. Shoulder to shoulder:

We measure the shoulder across the back. At highest point of armhole, straight across from seam to seam.





Waistcoats:

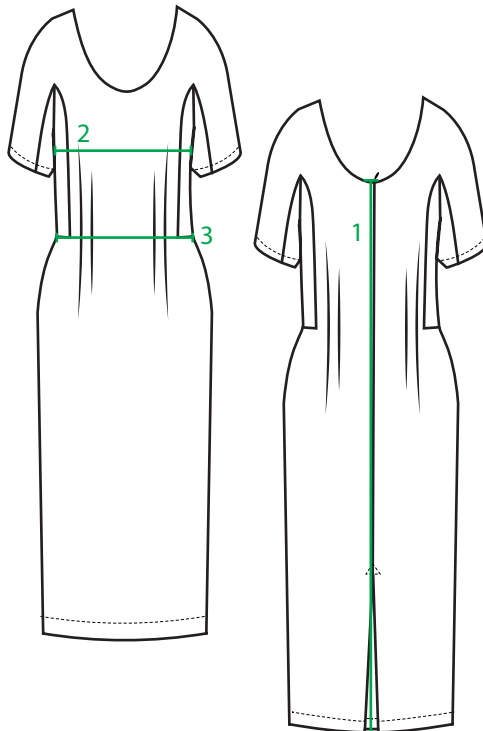
Measuring your Waistcoat is mostly the same for both men and women.

1. Center back length:

Measure the length of the waistcoat from the neck seam to the bottom of the waistcoat.

2. Shoulder to shoulder:

We measure the shoulder across the back. At highest point of armhole, straight across from seam to seam.



Dress:

Most of our dresses have a broad fit range, flattering many body types.

Our figure-hugging dress 'Erin dress' is equipped with extra seam allowance in the side- and under-arm seams for easy adjustments. This allows the dress to be let out up to 1,5 sizes on the hips, waist, bust and/or upper arm.

1. Centre back length:

Measure the length of the dress from neck seam to the bottom of the dress.

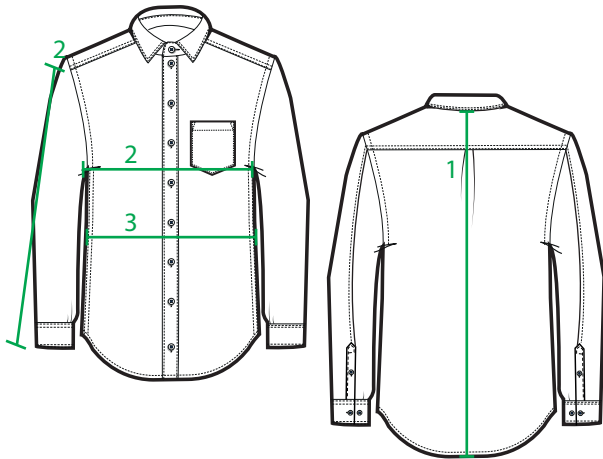
2. Chest

The measurement is taken from side seam to side seam directly under the armhole or sleeve.

3. Waist

Measure at the smallest part of the waistline, from side seam to side seam.

Hip



Shirts and blouses:

Measuring your shirt or blouse is mostly the same.

Please note that for certain men's styles we carry 2 sleeve lengths. Men's shirts sizes are based on the collar size.

1. Center back length:

Measure the length of the shirt or blouse from where seam meets the collar to the bottom of the garment.

2. Chest

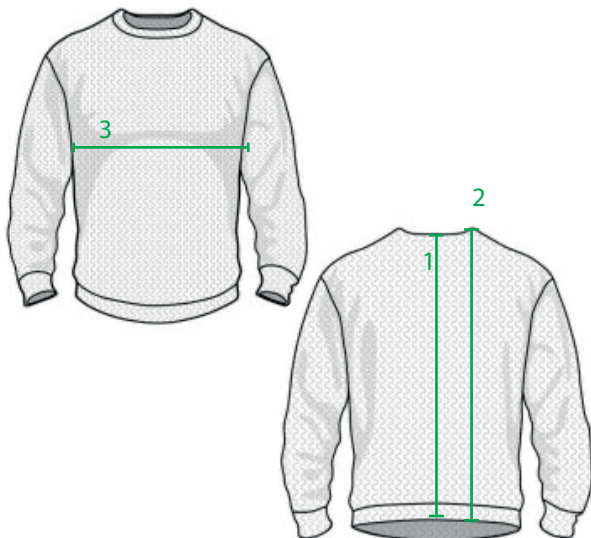
The measurement is taken from side seam to side seam directly under the armhole or sleeve.

3. Waist

Measure at the smallest part of the waistline, from side seam to side seam.

4. Sleeve length:

The sleeve length is measured from the shoulder seam, down the top edge of the sleeve to the end of the cuff.



Pullover or sweater:

Knitted fabric has a higher stretchability. Therefore, we need less measurements to determine the right size.

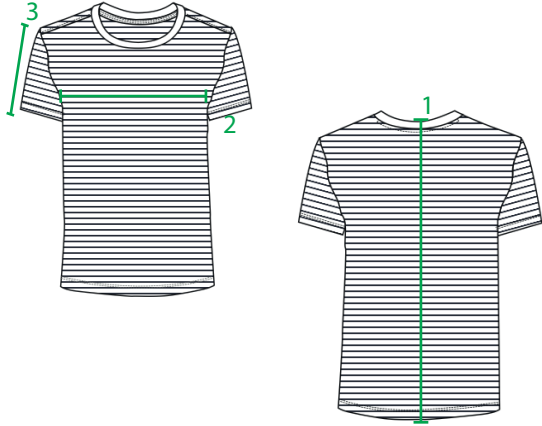
1. Center back length:

Measure the length of the garment from the neck to the bottom of the garment.

2. Center back from HSP. Please note: some garments are measure from HSP (highest shoulder point) see illustration.

3. Chest

The measurement is taken from side seam to side seam directly under the armhole or sleeve.



Polos and T-shirts:

Knitted fabric has a higher stretchability. Therefore, we need less measurements to determine the right size.

1. Center back length:

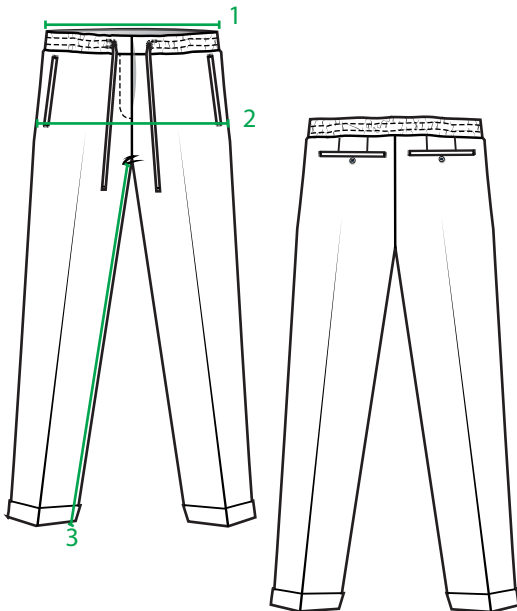
Measure the length of the garment from the neck to the bottom of the garment.

2. Chest

The measurement is taken from side seam to side seam directly under the armhole or sleeve.

3. Sleeve length:

The sleeve length is measured from the shoulder seam, down the top edge of the sleeve to the end of the cuff.



Pants and shorts:

Measuring your pants is mostly the same for both men and women.

However, for women we recommend taking in the wearers body type into consideration. The size may be determined by the hip measurement's or the waist, depending on the wearers body type. Our garments are suitable for alterations.

1. Waist:

To measure the waist, we measure edge to edge along the back waistband, with the waist pulled flat, but not stretched.

2. Hip:

Measure across your pants at the base of the zipper. Make sure that you measure from side to side.

3. Inseam:

For the inseam, we lay the leg flat with the inseam on top, and measure along the inseam from crotch to hem.

GARMENT MEASURES - WOMENS

MAGAN BLAZER// Women suitig jacket

SIZE	30	32	34	36	38	40	42	44	46	48	50
Centre back length	61	62	63	64	65	66	67	68	69	70	71
Sleeve length	58	59	60	61	62	63	64	65	66	67	68
Shoulder to shoulder	35,5	36,5	37,5	38,5	39,5	40,5	41,5	42,5	43,5	44,5	45,5

MEGAN WAISTCOAT // Women waistcoat

SIZE	30	32	34	36	38	40	42	44	46	48	50
Centre back length	48	49	50	51	52	53	54	55	56	57	58
Shoulder to shoulder	25,5	26,5	27,5	28,5	29,5	30,5	31,5	32,5	33,5	34,5	35,5

ERIN DRESS // Tailored sheet dress

SIZE	30	32	34	36	38	40	42	44	46
Centre back length	84	85	86	87	88	89	90	91	92
1/2 chest	39	41	43	45	47	49	51	53	55,5
1/2 waist	30,5	32	33,5	35	37	39	41	43	46
1/2 hip	43	45	47	49	51	53	55	57	59,5

CLAIR BLOUSE // Women dressed blouse

SIZE	32	34	36	38	40	42	44	46	48	50
Centre back length	64,5	65	65,5	66	66,5	67	67,5	68	68,5	69
1/2 chest	43,5	45,5	47,5	49,5	51,5	53,6	56,1	60,6	63,6	66,6
1/2 waist	38,2	40,2	42,2	44,2	46,3	48,3	50,4	52,4	55,4	58,4
Sleeve length	60,4	60,8	61,2	61,5	61,9	62,5	62,8	63,1	63,1	63,6

POPPY CREWNECK // Women pullover

SIZE	XS	S	M	L	XL	2XL	3XL	4XL
Lenght from HPS	61	63	65	67	69	71	73	75
1/2 chest	43	46	49	52	55	59	63	67

KELLY POLO // Women polo

SIZE	XS	S	M	L	XL	XXL
Lenght from HPS	60	62	64	66	69	72
1/2 chest	42	45	48	52	56	61
Sleeve lenght	16	17	18	19	20	21

F-TEE // Women T-shirt

SIZE	XS	S	M	L	XL	XXL
Front lenght	62	64	66	68	70	72
1/2 chest	38	40	42	44	46	48
Sleeve lenght	16	16,5	17,5	18,5	19,5	20,5

MILA T-SHIRT // Women T-shirt

SIZE	XS	S	M	L	XL	XXL
Front length	60	62	64	66	68	70
1/2 width	40	42	44	46	48	50

JEAN 5 POCKET // Women jeans

SIZE W	28	29	30	31	32	33	34	36	38	40
1/2 waist	35,5	36,75	38	39,25	40,5	41,75	43	45,5	48	51
1/2 hip	45,5	46,75	48	49,25	50,5	51,75	53	55,5	57,5	59,5

SIZE L	30	32	34	36
Lenght inseam	76	81	86,5	91,5

MEGAN PANT // Women suitig pant

SIZE	30	32	34	36	38	40	42	44	46	48	50
1/2 waist	35	36,5	38,5	40	42	44	46	48	50,5	52,5	55
1/2 hip	43,5	45,5	46,5	48,5	49,5	51,5	53,5	55,5	57,5	59,5	60,5
Inseam	78	79	80	81	81,5	81,5	81,5	81,5	81,5	82	82

RUBY 5 CHINO // Women chino pant

SIZE	3XS	2XS	XS	S	M	L	XL	2XL	3XL	4XL
1/2 waist	33	34,5	36	37,5	39,5	41,5	44	46,5	49	52,5
1/2 hip	41,5	43,5	45,5	47,5	49,5	51,5	53,5	55,5	57,5	59,5
Inseam	71	71	71	71	71	71	71	71	71	71

GARMENT MEASURES - MEN

JAMES BLAZER // Men suitig jacket

SIZE	40	42	44	46	48	50	52	54	56	58	60
Centre back length	70	71	72	73	74	75	76	77	78	79	80
Sleeve length	62	63	64	65	66	67	68	69	70	71	72
Shoulder to shoulder	40,5	41,5	42,5	43,5	44,5	45,5	46,5	47,5	48,5	49,5	50,5

JAMES WAISTCOAT // Men waistcoat

SIZE	40	42	44	46	48	50	52	54	56	58	60
Centre back length	53	54	55	56	57	58	59	60	61	62	63
Shoulder to shoulder	33,5	34,5	35,5	36,5	37,5	38,5	39,5	40,5	42	43,5	43,5

HARRY SHIRT // Men dressed shirt

SIZE	35/36	37/38	39/40	41/42	43/44	45/46	47/48
Collar	35/36	37/38	39/40	41/42	43/44	45/46	47/48
Centre back length	80	82	82	84	84	86	86
Chest width	99	106	112	120	121	140	152
Waist width	88	95	103	111	121	133	145
Sleeve 5	67,5	68	68	68	68	68	68
Sleeve 7	74,5	75	75	75	75	75	75

ACE CARDIGAN // Men cardigan

SIZE	46	48	50	52	54	56
Lenght from HPS	64	66	68	70	72	75
1/2 chest	46	48	50	52	55	59

BARRIE CARDIGAN // Men cardigan

SIZE	44	46	48	50	52	54	56	58/60	62/64	66/68
Lenght from HPS	64	66	68	70	72	74	77	80	82	82
1/2 chest	49	51	53	55	57	60	64	70	74	78

PORTER CREWNECK // Men pullover

SIZE	44	46	48	50	52	54	56	58/60	62/64	66/68
Lenght from HPS	64	66	68	70	72	74	77	80	82	82
1/2 chest	49	51	53	55	57	60	64	70	74	78

GEO SPENCER // Men spencer

SIZE	44	46	48	50	52	54	56	58/60	62/64	66/68
1/2 chest	49	51	53	55	57	60	64	70	74	78
Lenght	64	66	68	70	72	74	77	80	82	82

KENT POLO // Men polo

SIZE	XS	S	M	L	XL	XXL	3XL	4XL	5XL
Lenght from HPS	65	68	71	74	78	82	86	90	95
1/2 chest	46	50	54	58	63	68	73	78	83
Sleeve lenght	19	20	21	22	23	24	25	26	27

M-TEE // Men T-shirt

SIZE	XS	S	M	L	XL	XXL	3XL
Front length	69	71	73	75	77	79	81
1/2 chest	60	43	47	51	55	59	63
Sleeve length	18	19	20	21	22	23	24

MILES T-SHIRT // Men T-shirt

SIZE	S	M	L	XL	XXL	3XL
Length from HPS	70	72	74	76	78	78
1/2 width	49	51	53	55	57	59

DEAN 5 POCKET // Men jeans

Size W	29	30	31	32	33	34	36	38	40	42	44	46
1/2 waist	37,75	39	40,25	41,5	42,75	44	46,5	49	51,5	54	56,5	59
1/2 hip	51,25	52	52,75	53,5	54,25	55	56,5	58	59,5	61	62,5	64

SIZE L	30	32	34	36
Length inseam	76	81	86,5	91,5

JAMES PANT // Men suitig pant

SIZE	40	42	44	46	48	50	52	54	56	68	60
1/2 waist	36	38	40	42	44	46	48	50,5	53	55,5	58
1/2 hip	45	47	48,5	50,5	52,5	54	56,5	58,5	60,5	62,5	64,5
Inseam	81	81	82	82	83	84	85	86	87	88	89

MASON CHINO // Men chino pant

SIZE	2XS	XS	S	M	L	XL	XXL	3XL	4XL	5XL
1/2 waist	37	39	40	42	44	46	48	50	52,5	54,5
1/2 hip	45	47	49	51	53	55	57	59	61	63
Inseam	77	78	79	80	81	82	83	84	85	86